

Pulse Secure Windows Client – CoE-Net

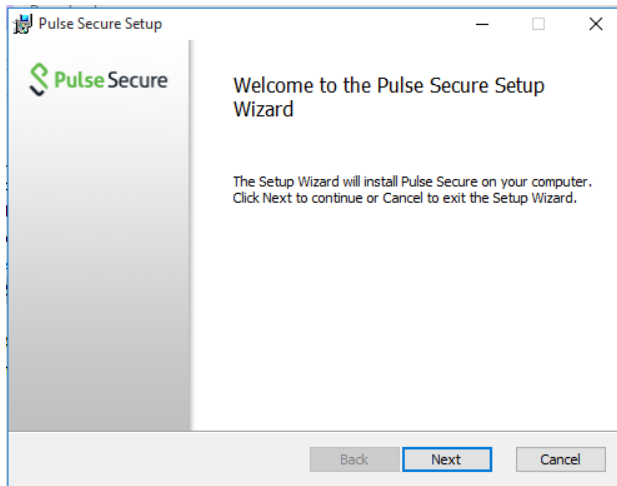
The College of Engineering is pleased to announce the implementation of the Pulse Secure VPN. This service provides a FIPS and NIST 800-171 compliant solution for access to the COE network, projects, and systems from remote locations, as well as enhanced functionality for all users.

Installing the Pulse VPN Client

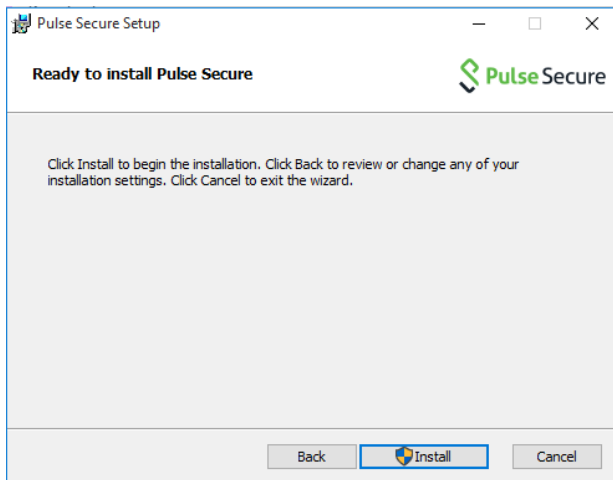
Download the correct Pulse Secure client for your OS; PulseSecure.x86.msi for a 32-bit OS and PulseSecure.x64.msi for a 64-bit OS.

Once downloaded double click the file.

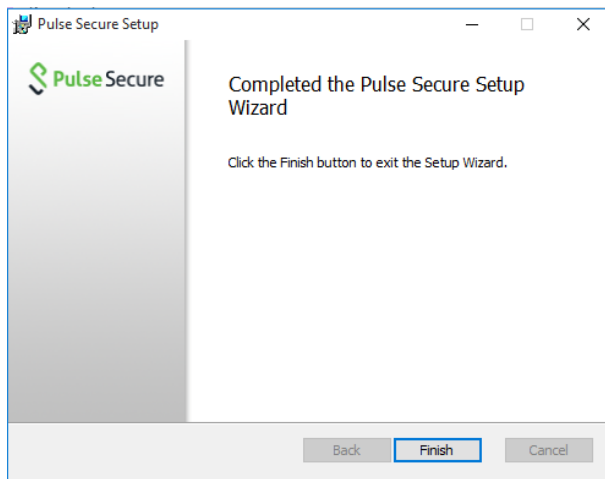
When the Pulse Secure Setup box appears click “Next”



Click on “Install”

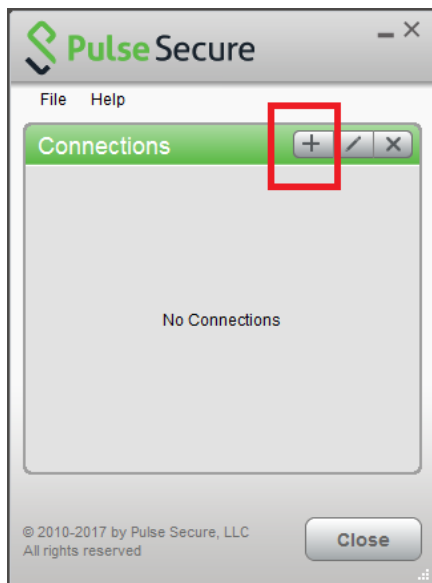


Once the client is installed click “Finish”.

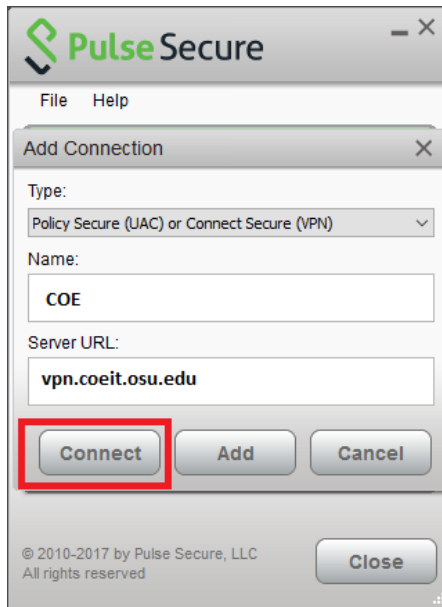


To configure and Connect using the Pulse Secure Client

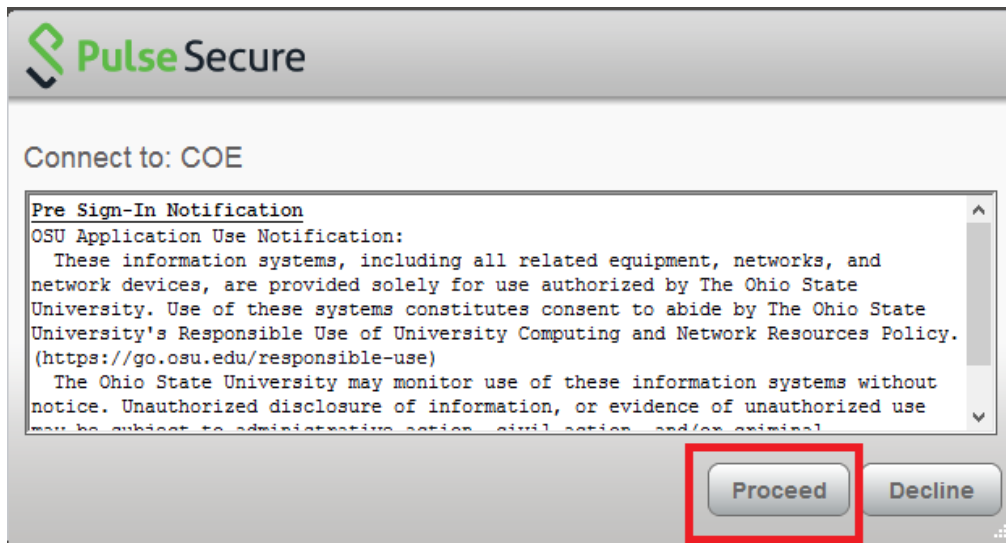
1. Open the Pulse Secure Client and click the “+” to create a new connection



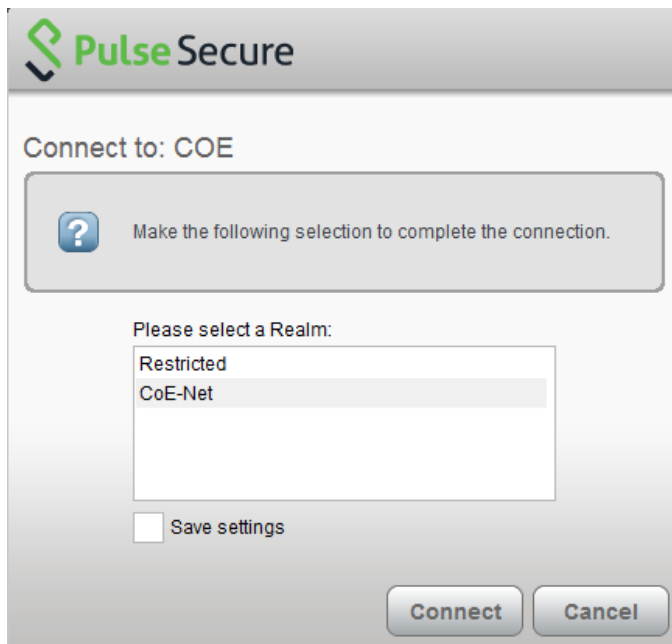
2. Provide a Name for the connection, and enter the server URL: vpn.coeit.osu.edu



3. Read and accept the sign-in agreement by clicking "Proceed"



4. Select the 'CoE-Net' realm and click connect



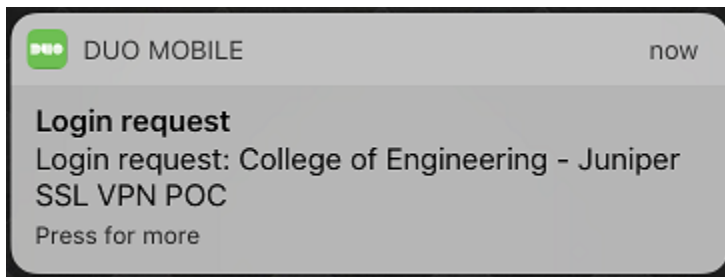
5. Enter your OSU login information (name.# and password) and click connect.



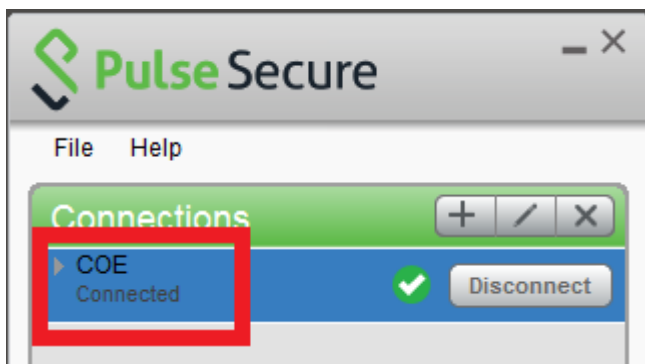
- A second authentication box will come up. This password uses Duo for authentication. Depending on how you've setup Duo you will type in push, sms, phone or the six digit code from the Duo application or hardware token in the "Secondary Password" box and then click on "Connect".



- Accept the login request



- VPN status should now show "connected".



9. If the connection is denied for any reason, Pulse should provide a verbose explanation of any missing requirements.